

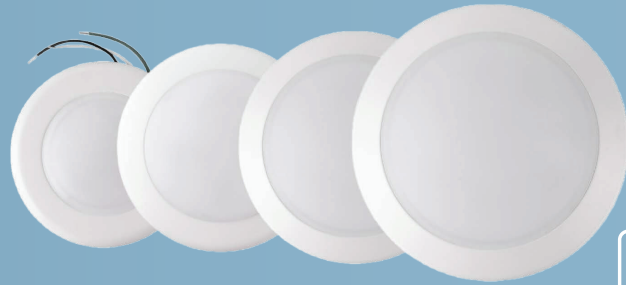


Disk Light Series

CCT Tunable Disk Down lights

DESCRIPTION

A flexible, low cost downlight solution for new construction and recessed can LED retrofit applications. It can be installed virtually anywhere, provides true color rendering with 90+ CRI, and can be continuously dimmed to 10% with standard dimmers. Ideal for healthcare, property management, hospitality, residential, office, retail, etc.



TECHNICAL SPECIFICATION

VOLTAGE	120V
POWER FREQUENCY	60Hz
POWER FACTOR	>0.9
5CCT	2700K 3000K 3500K 4000K 5000K
CRI	90
LIFESPAN	≥50,000hours
DIMMING	Triac Dimming
RATING	Suitable for wet locations
WORKING TEMP	-20°-40°C
FINISH	White/Black/Bronze/Nickel
WARRANTY	5 years limited

FEATURES

- Low profile, driverless design
- Continuous dimming from 10%-100% with many Triac dimmers
- Aluminum or steel housing
- Retrofit into an existing recessed can

EASY TO INSTALL

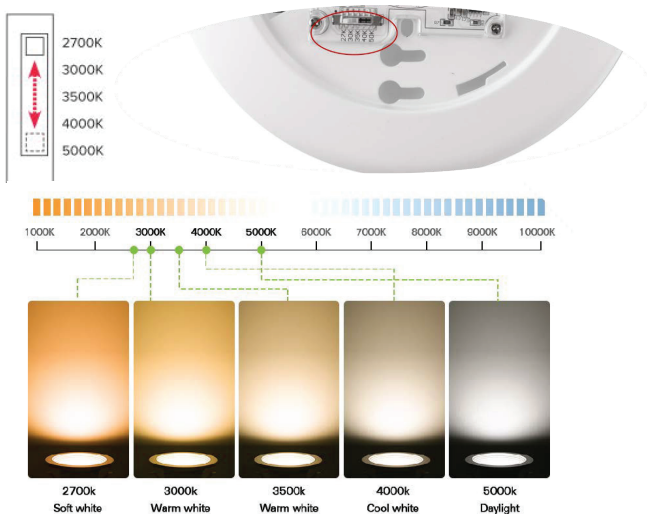
Led disk light can be installed into any 5 or 6 inch Recessed Can, or 2.7/3.5/4 inch Junction Box, ideal for under soffit and shower installations.

DIMMABLE

Compatible with most LED dimmers to give you a smooth, 100% 10% dimming experience, so you can choose the right brightness for you. Please check the dimmer list for compatible models of dimmers!

Brand	Lutron	Leviton
Model	NT-1000	6674
	S-603P	6633-P
	S-600P	6672
	DVCL-153P-WH	6631
	CTCL-153PDH-WH	IPLO6
	SLV-600P-WH	IE1205
	DV-600P	DB33K1
	CT-603PGH-WH	1F4205
	MIR-600THW-WH	1A2305
	MACL-153M-WH	DD00R-DL
	S-600PR-WH	DSL06-1TW
	DVLV-603P-V	IPV0R
	DVW-603PGH-WH	
	DVFSQ-LFH	
	SCL-153PR-WH	
	CT-600PR-WH	
	CT-103PR-WH	
	DVWCL-153PH-LA	
	CTCL-150H-WH	
	CTCL-153PR-WH	
	STCL-153PH-WH	

CHANGE COLOR TEMPERATURE WITH THE SIMPLE FLIP OF A SWITCH



LISTING

UL Listed. Energy Star.

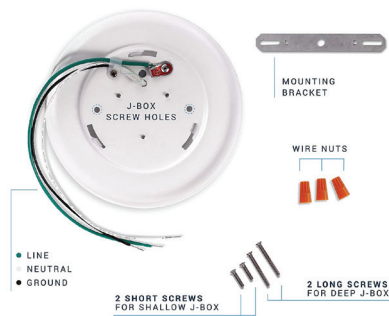


Specification data

Model No.	Size (in)	Wattage (w)	Lumens (lm)	Beam Angle
D234D-90-CCT	4"	10W	650lms	110.9°
D236D-90-CCT	6"	15W	1100lms	90°
D228-20W-CCT-90	8"	20W	1500lms	112.7°
D2111-20W-CCT-90	11"	30W	2150lms	107.6°

Accessories & Installation

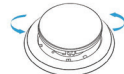
D234D-90-CCT, installed only with J-box



JUNCTION-BOX INSTALLATION

FITS 2.75", 3.5", OR 4" J-BOX

STEP 1



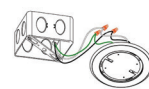
Remove lens by twisting it counter clockwise.

STEP 2



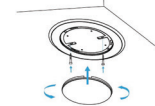
Attach the mounting bracket to the junction box, using supplied screws.

STEP 3



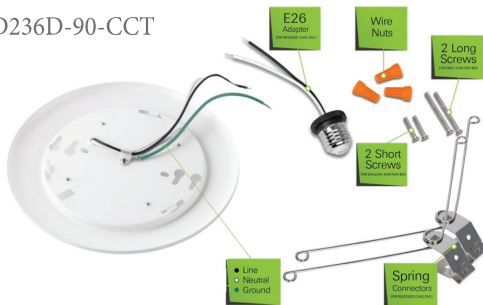
Attach white to white, black to black, copper to copper wires, using supplied wire nuts.

STEP 4



Attach the light to the J-box mounting bracket using screws; place the lens back into its original position.

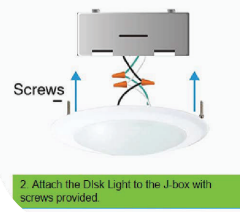
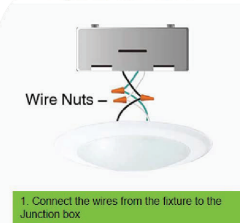
D236D-90-CCT



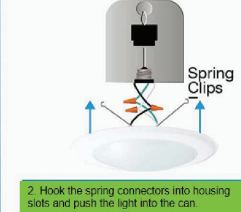
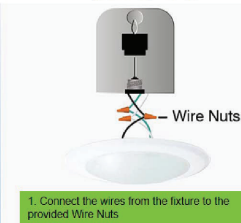
D228-20W-CCT
D2111-30W-CCT



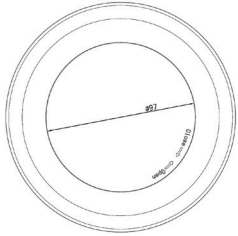
Option 1: J-BOX



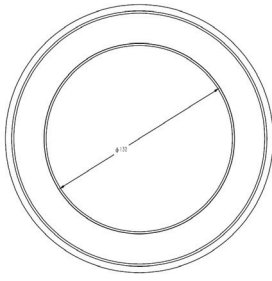
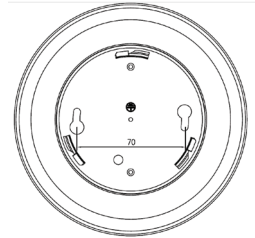
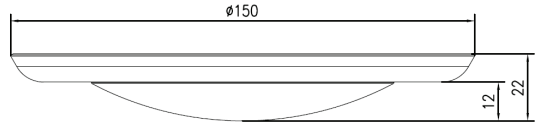
Option 2: CAN



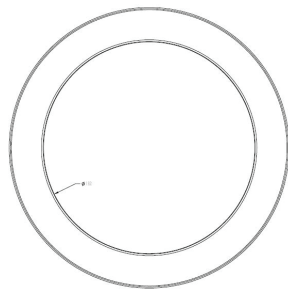
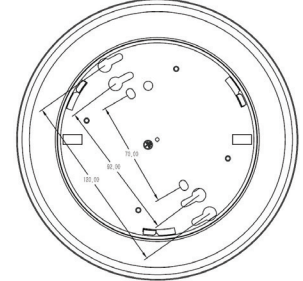
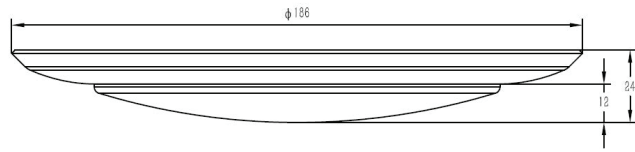
Size & Dimension



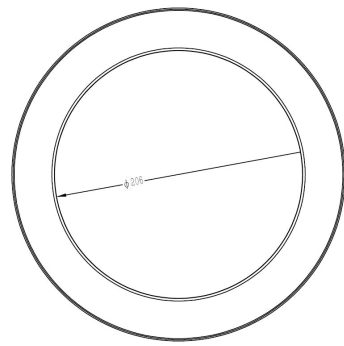
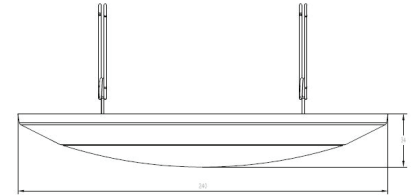
Size			
4inch	5.9"(150mm)	0.87"(22mm)	0.47"(12mm)



Size			
6inch	7.32"(186mm)	0.94"(24mm)	0.47"(12mm)



Size		
8inch	9.45"(240mm)	1.34"(34mm)



Size		
11inch	10.91"(277mm)	1.34"(34mm)

