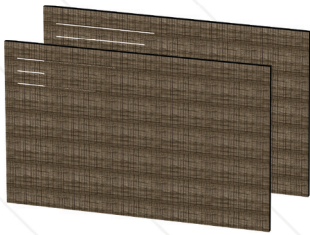




## Namu Collection



**Headboard**  
King And Queen

King : W80"xD1.5"xH42"  
Queen : W62"xD1.5"xH42"  
Full : W56"xD1.5"xH42"



**TV Panel**  
W48"xD1.5"xH42"



**Combo Unit**  
W48"xD1.5"xH41"



**Night Stand**  
W19"xD1.5"xH27"



**3 Chest Drawer**  
W40"xD22"xH36"



**Clothing Rack**  
W24"xD11"xH15"



**Luggage Bench**  
W33"xD1.5"xH18"



**Desk**  
W42"xD24"xH30"



**Towel Rack**  
W21"xD9"xH18"

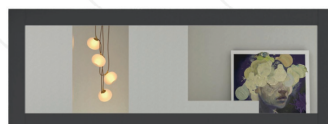
## Regular Mirror



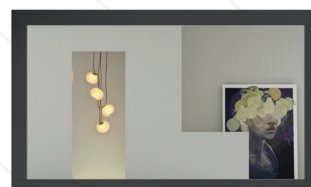
24x36



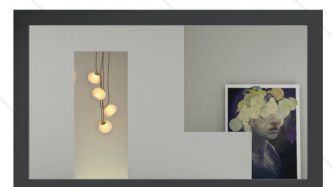
36x36



22x60



48x36



60x36



## Sparrow Collection



**King Headboard with 2 Side Panels & Floating Nightstand**

King : W80"xD1.5"xH42"  
 Queen : W62"xD1.5"xH42"  
 Full : W56"xD1.5"xH42"



**Queen Headboard with 1 Middle Panel & Floating Nightstand**

W24"xD17"xH60"



**Combo unit with desk**

W96"xD23"xH40"



**TV Panel**

W48"xD1.5"xH42"



**3 Chest Drawer**

W40"xD22"xH36"



**Clothing Rack**

W24"xD11"xH15"



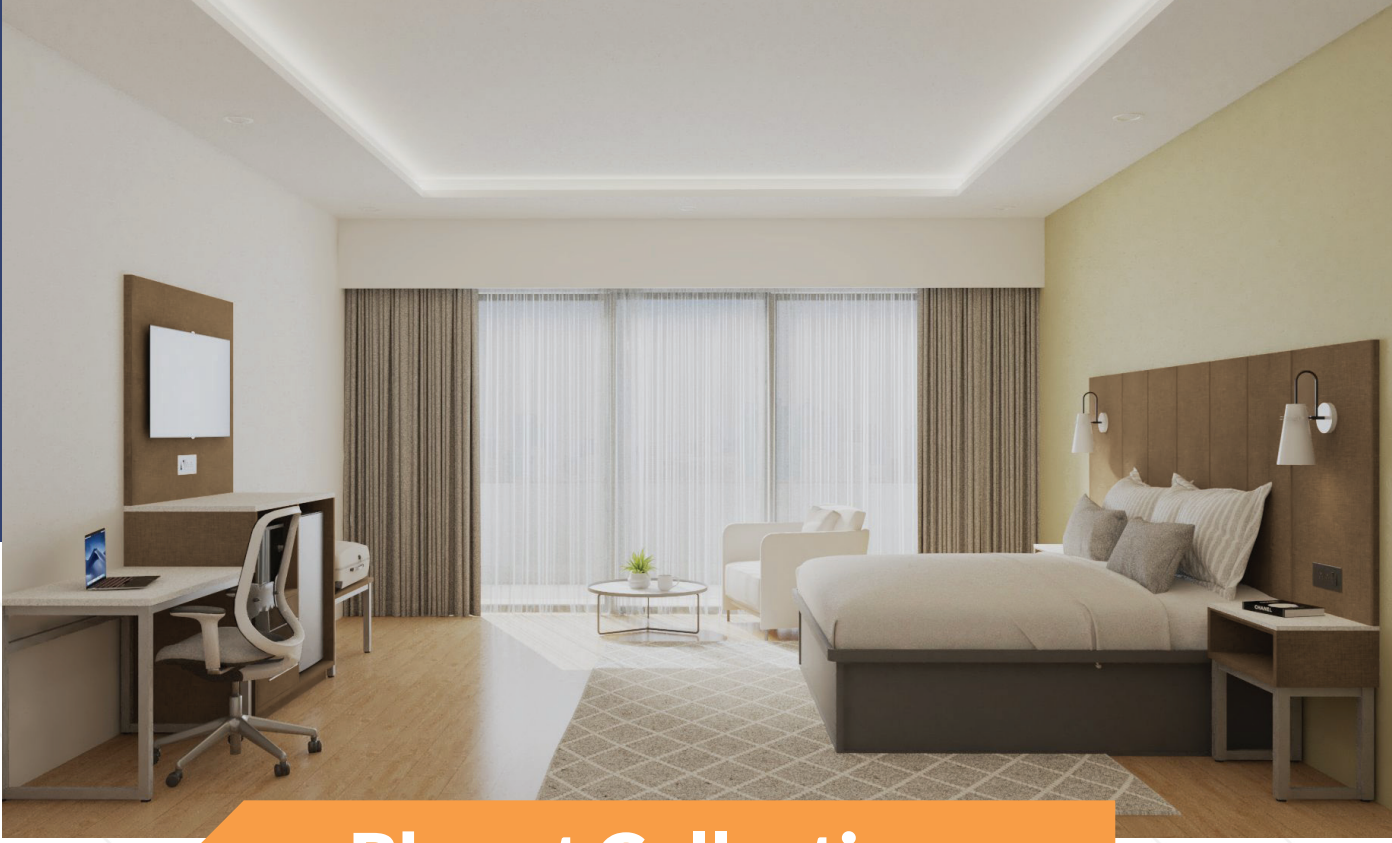
**Towel Rack**

W22"xD9"xH25"

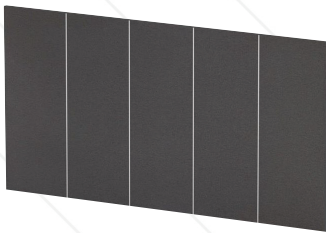
## Granite Table

- Easy To Clean Surface
- Stain | Burn | Scratch Resistant
- 18mm Thick With A 1 Inch Plywood Core
- Base - Rust Free Powder Coated Black Color
- Size : 30" X 30"





## Bharat Collection



**Headboard  
King And Queen**

King : W80"xD1.5"xH42"  
Queen : W62"xD15"xH42"



**Side Panel With  
Night Stand**

Side Panel : W24"xD1.5"xH42"  
Night Stand : W24"xD15"xH26"



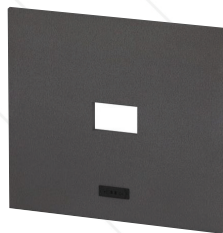
**Combo Unit**

W48"xD24"xH41"



**Desk**

W42"xD24"xH30"



**TV Panel**

W48"xD1.5"xH42"



**Luggage Bench**

W32"xD22"xH18"

## Chairs

### Black Leather Chair

- Stain Resistant
- Burn Resistant
- Scratch Resistant
- Pu Leather



### Breakfast Chairs

- Size : 530x480x850
- Size : 480x500x860
- ash wood+pu+ sponge+plywood

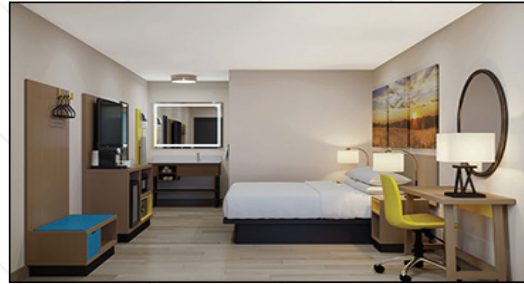
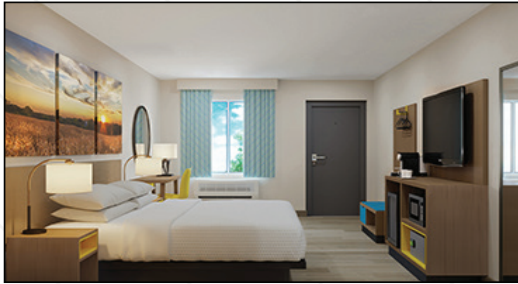


# We Do Custom Pre Order Furniture

## Comfort Inn Rise And Shine Collection



## Days Inn Dawn Collection



## Holiday inn 2.0 Collection



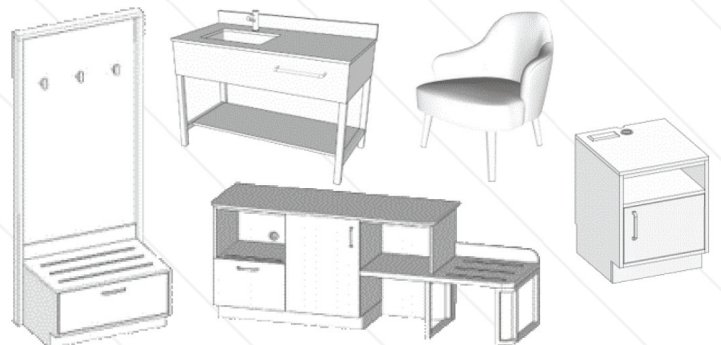
## Motel 6 Gemini Collection



## Super 8 2.0 Collection



## Hampton Inn Kinetic Collection



**Tarun Patel : 551 - 998 - 4923**

**Pratik Patel : 256 - 919 - 1583**

**Email: [furniture@usahospitalitytn.com](mailto:furniture@usahospitalitytn.com)**

**Smit Suthar : 256 - 642-6036**

**Anwar Bhai : 713 - 474-4180**

**Website: [www.usahospitalitytn.com](http://www.usahospitalitytn.com)**

**Kido Bhakta : 763 - 442 - 3181**