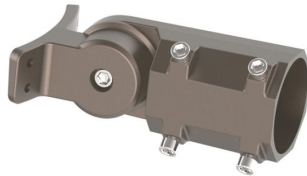




**GM**



**AM**

P/N: AST-GS03-150WBT3DA2-abcWef

Note:

GS03 = Product series, LED Garden Light;

150W = Rating Power;

B =LED manufacturer, Lumileds 2835;

T3 = light distribution type, TYPE III;

D=Color Tunable;

A2= Version number;

“a” can be any two letters to represent lamp colors , BR=Brown, BH=Black, or Customized;

“b” can be “3RP”, “3NP”, “5RP”, “5NP”, “7RP”, “7NP”, “DP” or blank for photocontrol type provided or not;

“c” can be “10SP” or “20SP” for Surge-protective Device type provided or blank for no Surge-Protective Device provided;

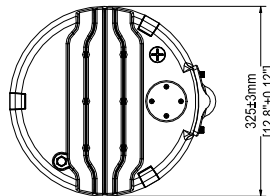
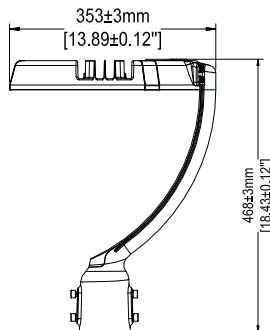
“W” for Wattage Adjustable;

“e” can be “AM” or “GM” to represent mounting bracket types;

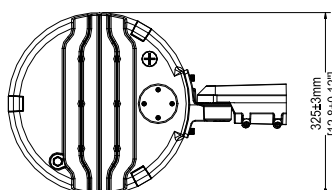
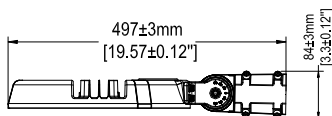
“f” can be any two digits to represent CCT.

## DIMENSIONS

**GM**



**AM**



## ADVANTAGE

- UL cUL DLC5.1 Premium certificate;
- Lumileds Chip, high CRI;
- Input voltage 120-277VAC;
- Output constant current lever can be; adjusted through output cable with 0-10V;
- No UV or IR in the beam;
- Easy to install and operate;
- Energy saving, long lifespan;
- Light is soft and uniform, safe to eyes;
- Instant start, NO flickering, NO humming;
- Green and eco-friendly without mercury;

## APPLICATION

- City Slow Lane、Narrow Lane;
- Residential Area、Plaza;
- Sightseeing Area、Village Road and so on;

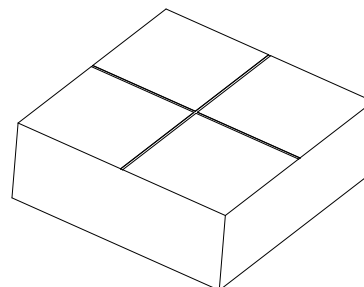
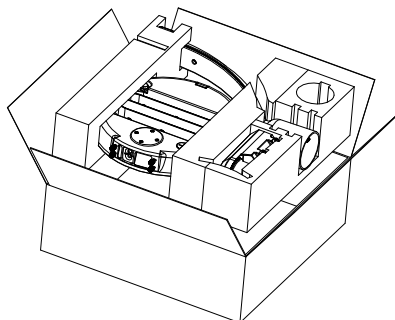
## SPECIFICATIONS

<b>OPTICAL</b>	Input Power (Tolerance : $\pm 10\%$ )	150W (Wattage Adjustable Range: 25%-100%)		
	Color Temperature (Color Tunable)	4000K	5000K	6000K
	Lumen (Tolerance : $\pm 10\%$ )	20250 LM	22200 LM	19800 LM
	Efficacy (Tolerance : $\pm 3\%$ )	135 LM/W	148 LM/W	132 LM/W
	CRI	>80		
	Color Consistency	<7 Steps (or <7 SDCM)		
	BUG	B3-U0-G3		
	Distribution Pattern	Type III		
	Beam Angle (50%) (Tolerance : $\pm 10\%$ )	150*110 Degree		
<b>ELECTRICAL</b>	Input Voltage and Frequency	120-277VAC, 50/60Hz		
	PF (Tolerance : -3%)	$\geq 0.9$		
	THD (Tolerance : +5%)	$\leq 20\%$		
	Flicker Percent	<30%		
	Driver Brand	BECKY		
	Driver Model	BQE155C-130-PVF-PS		
	Driver Surge protection	L/N-PE: 4kV, L-N: 6kV		
	Dimming	0-10V dimming standard		
	Sensor Type	Exterior Photocell, Integral Sensor Receptacle, photocell		
	Optional Accessory	Surge-protective Device, shorting cap		
<b>MATERIALS</b>	LED Brand	Lumileds		
	LED Type	SMD2835		
	LED QTY	330 PCS		
	Housing	Die-cast aluminum		
	Housing Color	Brown, Black, or Customized		
	EPA	1.3 ft <sup>2</sup>		
	Waterproof Rating	WET (IP65)		
<b>OTHERS</b>	Operating Temperature	-40°C TO 50°C		
	Storage Temperature	-40°C TO 80°C		
	Operating Humidity	5% - 95% RH		
	Storage Humidity	5% - 95% RH		
	Warranty	5 years		

## PACKAGE

Bracket Type	Carton Size	Qty / Carton	Net Weight / Carton	Gross Weight / Carton
AM	490*470*145 mm	1 PC	4.3KG [9.46 LBS]	5.6KG [12.32 LBS]
GM	[19.29*18.50*5.71 inch]	1 PC	4.6KG [10.12 LBS]	5.9KG [12.98 LBS]

Tolerance of Carton Size:  $\pm 15$  mm [ $\pm 0.59$  inch], Tolerance of Weight:  $\pm 10\%$ .



## LIGHT DISTRIBUTION TESTING PARAMETERS < Type III >

### Luminaire Property

Luminaire Manufacturer:  
 Luminaire Category:  
 Lamp Catalog:  
 Number of Lamps:  
 Luminous Length (mm):  
 Luminous Height (mm):  
 Current: 1.270 A  
 Power Factor: 0.993

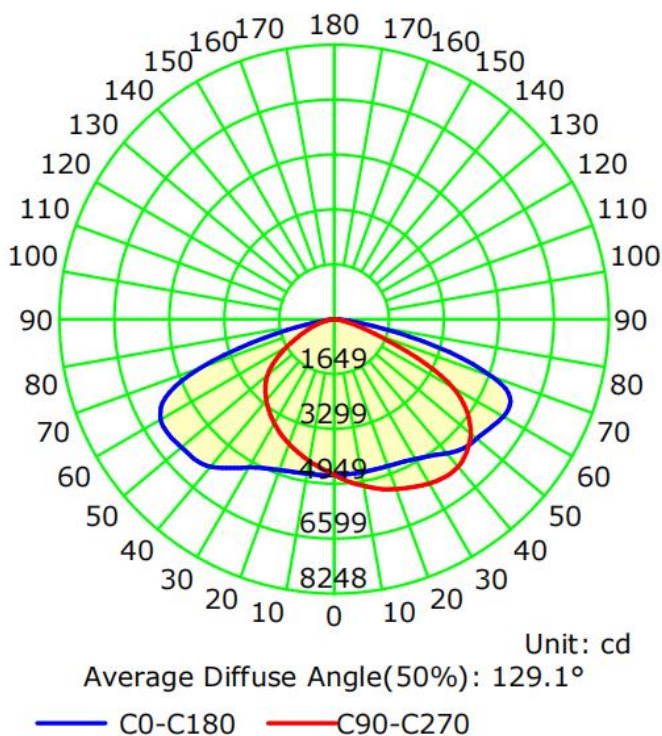
Luminaire Description:  
 Lamp Description:  
 Lumens per Lamp:  
 Luminous Width (mm):  
 Voltage: 120.0 V  
 Power: 151.31 W

### Photometric Results

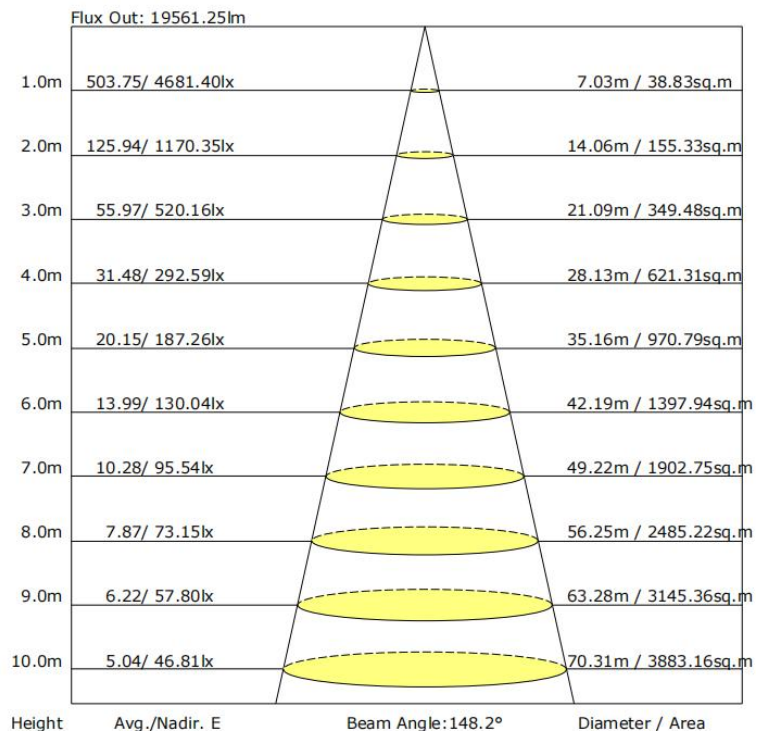
IES Classification: Type III  
 Total Rated Lamp Lumens: 20513.7 lm  
 Efficiency: 100%  
 Upward Ratio: 0%  
 C0r0 Intensity: 4681.4 cd  
 Pos of Max. Intensity: H157.5 V46  
 Beam Angle(C0/C180,C90/C270,C45/C225,C135/315): 148.2, 110.0, 130.8, 130.4

Longitudinal Classification: Very Short  
 Measurement Flux: 20513.7 lm  
 Downward Ratio: 100%  
 Luminaire Efficacy Rating (LER): 135.62  
 Max. Intensity: 6599.02 cd

Luminous Intensity Distribution Curve



The Average Illuminance Effective Figure



## NOTICE FOR USER

- Please turn off power before install or change assembly parts.
- The input voltage and lamps should be matched, after connecting the power line, Please make sure the wiring section is insulated.
- No-professionals, must not install and disassemble the lamps.

## TROUBLE SHOOTINGS

Troubles	Check points
Flickering of the light	Turn off the power and turn on again in 3 minutes. If same phenomena occur, then call agencies.
Out of working	Please check the connection.