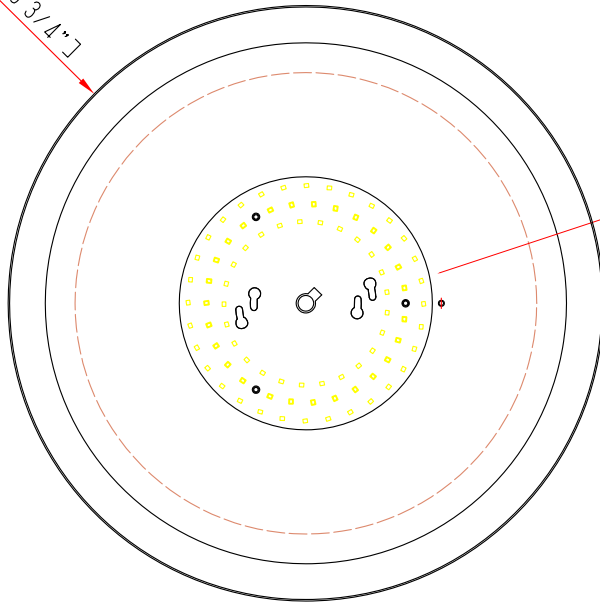


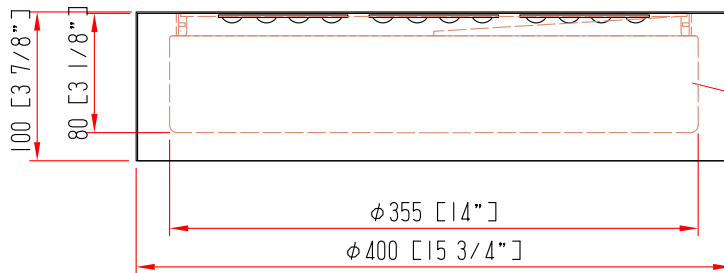
unit:mm/inch



$\phi 400$ [$\phi 15\ 3/4$ "]



AC LED 30W
3000K-4000K-5000K



outside Black and white
on the inside
White Frosted Acrylic

NOTES:

- AC LED 30W 3000K-4000K-5000K
- SHADE FINISH:Black With White Frosted Acrylic
- METAL FINISH:outside Black and white on the inside
- INTERGRATED LED
- ETLISTED
- Hardwired

HOSPITALITY	PROJECT NAME :	VERSION :	A0
	DESCRIPTION:Ceiling Light	DATE :	2024-06-25
	ITEM NO.:US-S104-I6	CHECK BY :	
	QUANTITY:200PCS		